



**BRITISH
HOT TUBS**



TABLE OF CONTENTS

- 3** Introduction
- 4-5** British Design
- 6-11** Features
- 12-27** Hot Tubs
- 28-29** Colour Choices
- 30-31** Install Inspiration

As Featured On



*An appreciation for heritage
without being defined by it,
quirky, stylish and fun.*

Over the last 5 years the UK Hot Tub industry has seen (and survived) the 'website only' internet traders effect, with many customers purchasing hot tubs online.

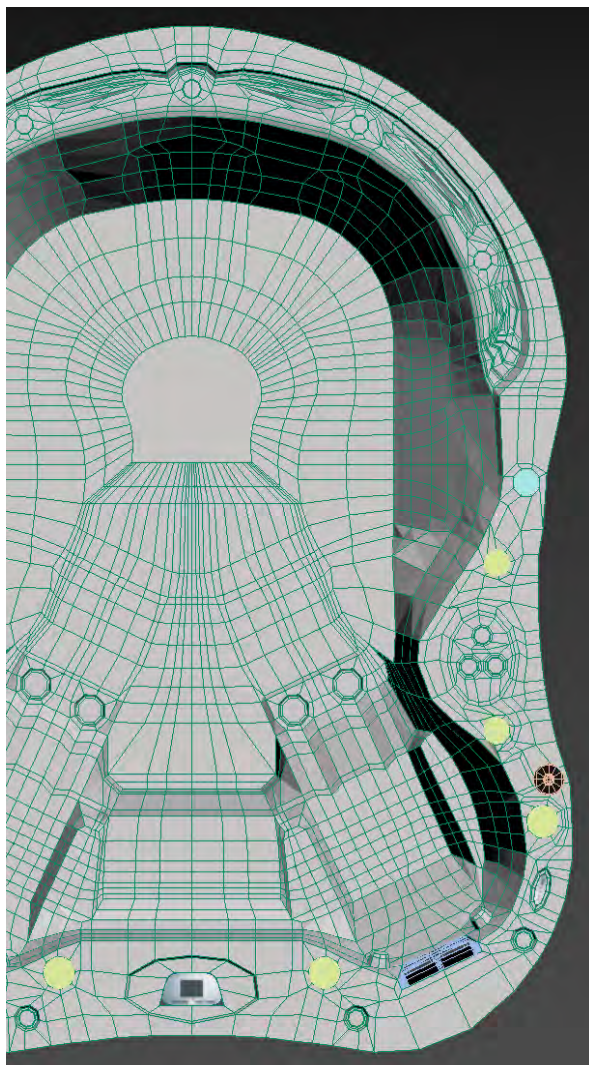
Many hot tub retailers focus on almost 'too good to be true' pricing, with no in-store experience or professional aftercare, so the customer later regrets their purchase due to high running costs and low reliability.

There has to be a better way?

This is where the story of British Hot Tubs begins. With over 40 years' experience in the industry we have created a '**designed in the UK**' range of hot tubs, with the sole objective to achieve a high specification hot tub at great value for money. British Hot Tubs adhere to international standards and are fit for the UK's variable climate, backed by the best warranties in the business.

ABOUT US





PROUDLY DESIGNED IN THE UK

We have invested 12 months and a huge budget in creating the right partnership, the right designs and the right processes - this is important to us to ensure that our customers will buy a product that is reliable, safe and energy efficient.

Our range of 13 hot tubs feature the very best available innovations and North American parts and components.



Coventry & Warwickshire
Local Enterprise Partnership



HELP TO GROW

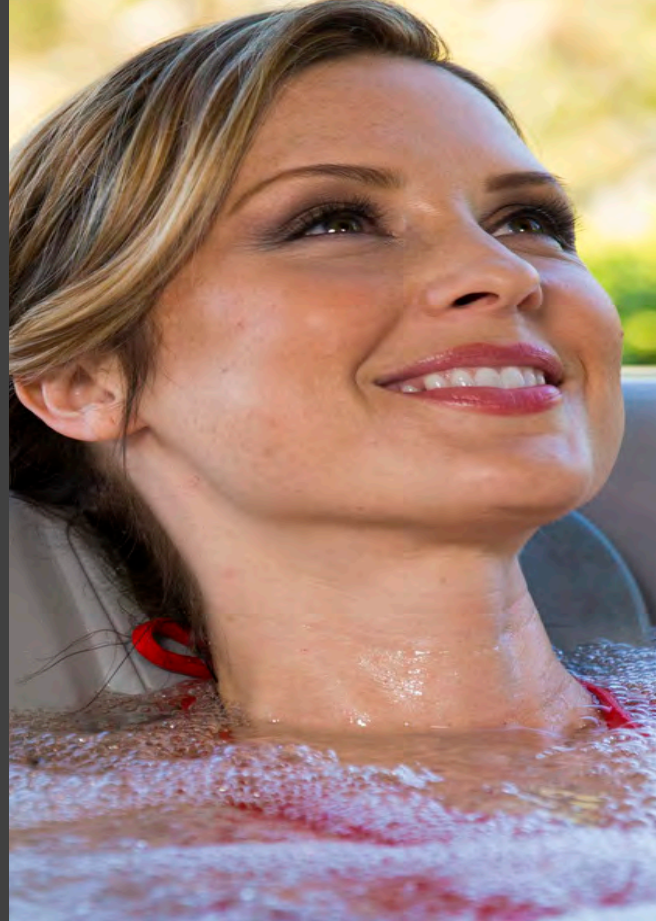


NO HIDDEN COSTS

Our range is especially adapted for the variable British climate and offers excellent energy efficiency, performance, innovation and beautiful designs - ultimately enabling you to enjoy your hot tub experience without worrying about high electrical costs and tedious water management.

OUR COMMITMENT TO YOU

We are passionate about hydrotherapy and the life-changing benefits of owning a hot tub. We are dedicated to making a difference in how your body heals, how you interact with loved ones and ensuring that we make a lasting impact in your life by providing the best quality product - a hot tub to be proud of.



FEATURES

At the heart of every British Hot Tub are the key principles of energy efficiency, reliability, innovation and user experience.

That's why we can boast a long list of unique features! We have the experience, the knowledge and the customer feedback over a long history to enable us to design the ultimate hot tub.

ECOZONE™



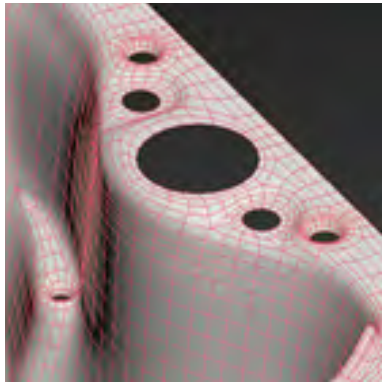
There are 3 layers of insulation to our Eco Zone system which not only protects the parts and plumbing, but helps to reduce the noise from the vibrations of the spa and ultimately locks the heat in ensuring lower running costs.

PUREZONE™



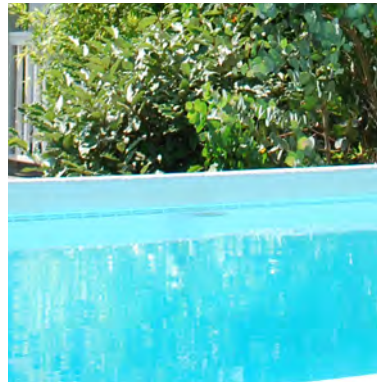
Our Pure Zone Plus system is perfect for those bathers with sensitive skin, who want the most chemical free system possible.

When the spa water filters, the water passes through a UV light attacking and destroying any bacteria, ultimately providing the cleanest and purest water possible, while reducing chemical consumption and maintenance.



80% more effective than the average skimmer filtration system, Clear Zone technology provides external pressurized filtration where the filter is outside of the bathing area.

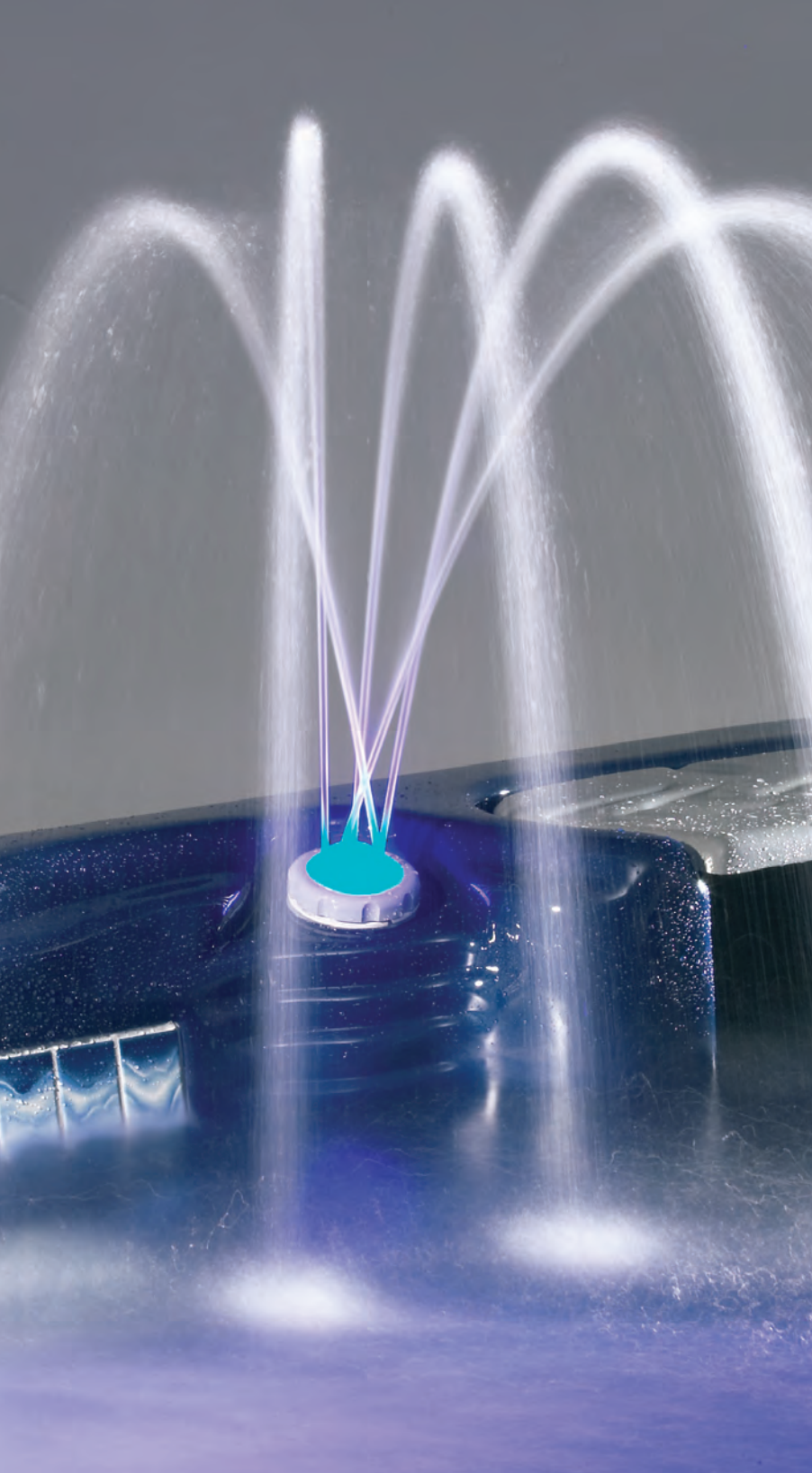
This provides cleaner, clearer water, less chemical consumption and maintenance, lower running costs and is ultimately more hygienic for all bathers.



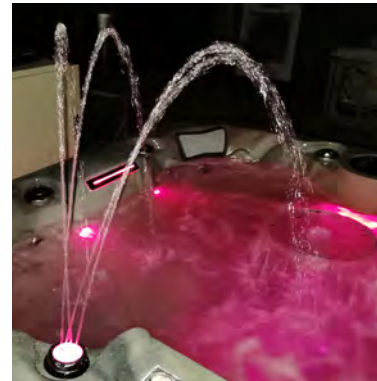
This is a chlorine free inbuilt self-dosing system allowing the water to be sanitized gradually using easy to use water cleaning cartridges.

Clean Zone helps to reduce maintenance and chemical consumption and gives a bonus of softer water with no harsh chemical odour.





ZENZONE™



Unwind in the Zen Zone with drinks holders, colour changing lighting and soothing waterfalls.

The soothing waterfalls offer bubbling cascades of water, adjustable rope and blade water features. The waterfall spray can be switched to create a water flame or a subtle bubble flow.

Upgrade to Zen Zone Plus and light up your waterfall and cup holders to create a multi-colour lighting show.

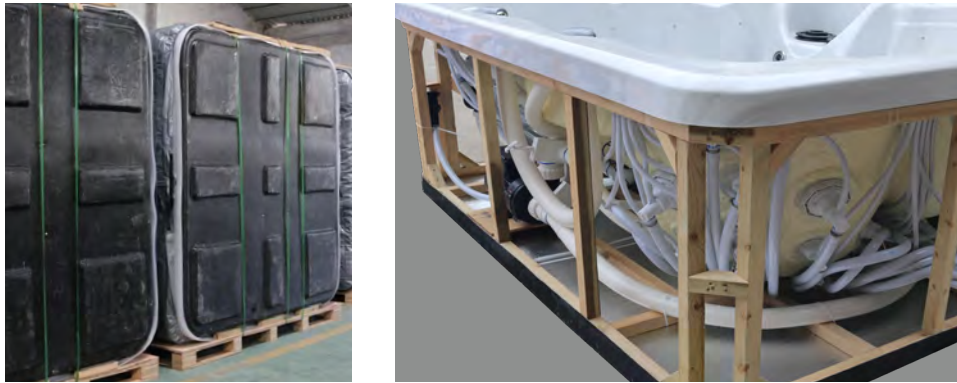
VIBROZONE™



Vibro Zone is our carefully and cleverly designed waterproof, audio system and is housed in the cabinet of your spa, to deliver spectacular sound.

Upgrade to Vibro Zone Plus for a 4 speaker system with Bluetooth, Aux, USB & Radio, along with a waterproof remote control, coupled with an impressive subwoofer for the ultimate party atmosphere.

SOLIDZONE™



The ABS fibreglass base protects the inner structure of the hot tub and provides a substantial and stable platform for the hot tub to be positioned securely.

The treated timber frame, allows for the hot tub structure to expand and contract, to absorb the unavoidable moisture which is created within the high humidity environment of a hot tub cabinet.

The strongest Aristech® acrylic shells are used which are backed with vinyl ester resin and reinforced with 10-12 layers of hand rolled fibreglass to ensure there is a perfect bond between the acrylic and the glass fibre, and to eliminate the risk of delamination, blistering and spider cracking of the hot tub shell.

Steel reinforcement is placed along the stress points of the spa shell for additional strength and support in specific structural areas.

Aristech Acrylics® is the leading provider of acrylic sheets to the hot tub and bath industry for almost 50 years. Our hot tub shells are the highest quality and strength and include Microban antimicrobial product protection which inhibits the growth of harmful bacteria that can cause odours, stains, and product degradation.

That's why our hot tub range comes with a 10 year shell guarantee.



We use USA Made Balboa Control Systems and Heaters (The worlds best hot tub control system) which utilise patented piezo electronic switch technology and unique potting techniques to eliminate moisture in harsh environments, thus offering control panel quality and reliability that is second to none.



ACUZONE™

Our Acu Zone™ massage is inspired by acupressure therapy. The small but powerful acupuncture jets knead your body and helps reduce stress levels or alleviate pain.

SPORTSZONE™

Sports Zone™ features directional strategically placed jets which produce a deeper penetrating hydro massage experience, that rehabilitates by targeting soft tissue areas.

GYROZONE™

The Gyro Zone™ consists of a bank of vibrating and rotating jets that focus on the back and the legs, offering a deep tissue massage to stimulate bloodflow to sore and tense muscles.

POWERZONE™

The Power Zone™ has large 5" jets targeted to the upper and lower back that offer a powerful typhoon of hot water hydrotherapy which creates a high pressure pulsating massage.

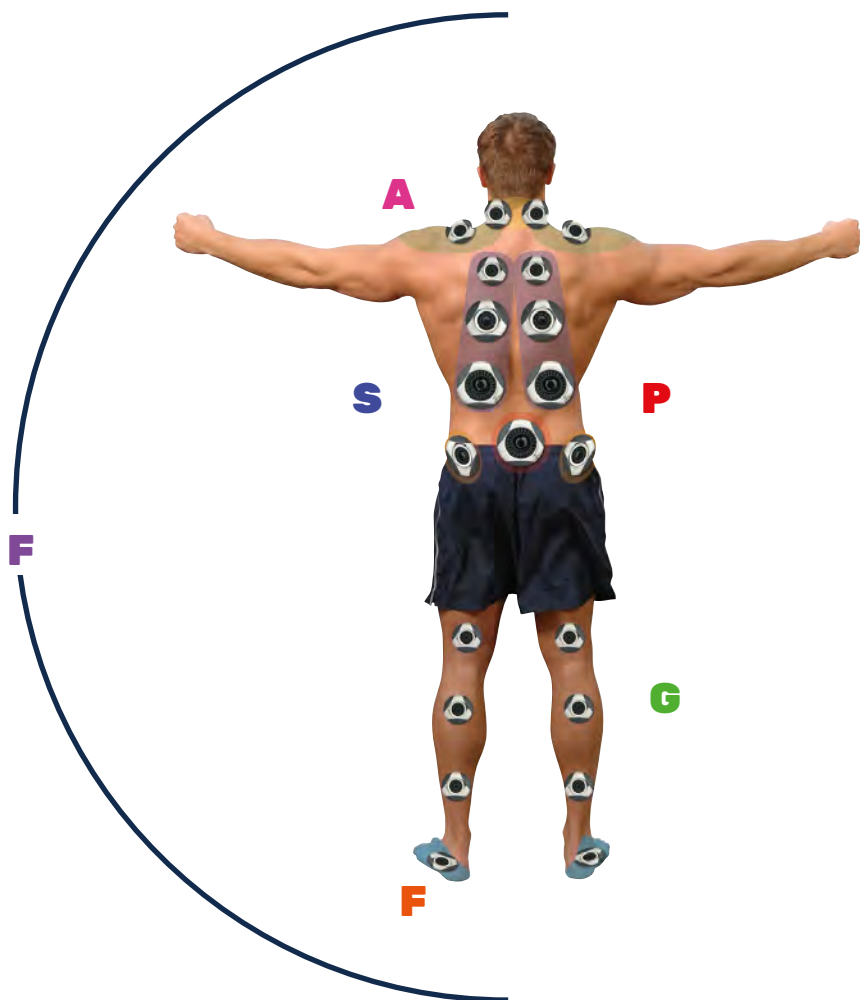
FOOTZONE™

Important nerve endings in the feet connect to all parts of your body. Foot Zone™ targets upper and lower parts of the feet with invigorating streams of water providing relaxation throughout the body.

FIBROZONE™

The FibroZone™ is mostly found on the loungers of the British Hot Tubs, and a popular zone for those that suffer with Fibromyalgia; offering a spa within a spa, with a range of massage jets designed to alleviate muscle stiffness.

These hydrotherapy jets provide anything from a deep pressure kneading massage, to a light stroking massage; with both small and large directional and rotational jets providing full body therapy; relaxing contracted muscles, improving blood flow and stimulating the 'stretch-reflex' in the muscles.



Although all hot tubs offer massage features, we take therapeutic value very seriously. A survey of our customers uncovered the fact that therapeutic benefits are the main reason why people invest in a hot tub.

Over the years, we have consulted with physiotherapists, and athletic experts to help maximise our Hot Tub design and build, to bring you uncompromising hydrotherapy.

That is why our hot tubs are designed with you in mind – our models offer strategically placed jets and advanced fully customizable massage features.

More jets does not necessarily mean a more effective massage. Precisely locating the correct size jet and massaging action where they are most effective, is key to providing health benefits. Therefore, we have created various zone therapy seats in our British Hot Tubs to focus on specific areas of the body for the ultimate hydrotherapy experience.

SPECIFICATION

DIMENSIONS:	208 x 177 x 86 CM
SEATS:	5-6 Person All Seater
PUMPS:	2 (1 x 1.5HP/1 x 2HP)
POWER:	13 AMP Plug n Play
JETS:	70 Recessed Stainless Steel
FILTRATION:	Pressurized Filtration



WESTWOOD™

Perfect for a larger family where space is a little limited.

The 2 max therapy seats deliver wrap around water massage, and the bench seating benefit from the Sports Zone™ delivering deep tissue therapy to the upper and lower back. This area is also perfect to lounge out and socialise with no restrictions.



SPECIFICATION

DIMENSIONS:	212 x 150 x 86 cm
SEATS:	3 Person Lounger
PUMPS:	2 (1 x 1.5HP/1 x 2HP)
POWER:	13 AMP Plug n Play
JETS:	71 Recessed Stainless Steel
FILTRATION:	Pressurized Filtration



MERCURY™

With luxury neck pillows in every seat the Mercury™ seats 3 comfortably, with a hydrotherapy lounger that offers 2 types of massage and fits a variety of body shapes for ultimate comfort. The low profile makes entry in and out of the spa easier, and because of the deeper shaped seating the depth of water is not compromised.

SPECIFICATION

DIMENSIONS:	195 x 195 x 86 cm
SEATS:	6 Person All Seater
PUMPS:	2 (1 x 1.5HP/1 x 2HP)
POWER:	13 AMP Plug n Play
JETS:	71 Recessed Stainless Steel
FILTRATION:	Pressurized Filtration



SHAKESPEARE™

Perfect for all shapes and sizes; with barrier free open seating, textured non-slip steps into the spa that double up as a higher cool down seat, and comfortable headrests in all corner seats. The large footwell accommodates all bathers, and the ergonomic seating benefits those who may want to lounge out without having a lounger in the spa, which often takes up more space.

This spa features a range of massage zones including the popular Acu Zone™ - offering a deep tissue acupuncture massage for ultimate hydrotherapy. With a low profile height and footprint under 7ft square, this spa certainly ticks the boxes for those who may be restricted on space.



SPECIFICATION

DIMENSIONS:	195 x 195 x 86 CM
SEATS:	5 Person Lounger
PUMPS:	2 (1 x 1.5HP/1 x 2HP)
POWER:	13 AMP Plug n Play
JETS:	70 Recessed Stainless Steel
FILTRATION:	Pressurized Filtration



SPENCER™

Perfect for a larger family where space is a little limited.

The 2 max therapy corner bucket seats deliver wrap around water massage and the bench style design makes socialising easy. The head to toe massage lounger offers full body therapy benefiting from the luxury neck pillow, and the cool down seat is great for those who may not want to be as immersed in the water.

SPECIFICATION

DIMENSIONS:	213 Diameter x 92 CM
SEATS:	6-7 Person
PUMPS:	2 (1 x 1.5HP/1 x 2HP)
POWER:	13 AMP Plug n Play
JETS:	70 Recessed Stainless Steel
FILTRATION:	Pressurized Filtration



WINSTON™

Reminiscent of the original, barrel-style hot tubs. Entertain up to seven guests in this classic barrier-free seating design, featuring a spacious foot well and an authentic typhoon jet.

The circular design offers social seating perfect for all shapes and sizes. This spa also offers higher cool down seating - also perfect for the smaller person and doubles up as an access step.



SPECIFICATION

DIMENSIONS:	191 x 229 x 92 CM
SEATS:	6-7 Person All Seater
PUMPS:	2 x 3HP
POWER:	32 AMP
JETS:	113 Recessed Stainless Steel
FILTRATION:	Pressurized Filtration



SANDRINGHAM™

An all seated hot tub designed specifically to suit a range of body shapes, with bucket and ergonomic seating boasting an array of hydrotherapy massage zones.

This hot tub is packed with power and benefits from a large foot well and beautiful waterfalls, perfect as a social hub as well as offering a high quality massage experience.

SPECIFICATION

DIMENSIONS:	214 x 201 x 87 CM
SEATS:	6 Person All Seater
PUMPS:	2 x 3HP
POWER:	32 AMP
JETS:	106 Recessed Stainless Steel
FILTRATION:	Pressurized Filtration



KENSINGTON™

Perfect for any family with a range of hydrotherapy seats to suit all shapes and sizes, including a higher cool down doubling up as a step for easy accessibility.

The clever seating arrangement allows for a bench style seating area, as well as two wrap around max therapy bucket seats. Featuring a range of massage zones, the Kensington is packed with hydrotherapy benefits and also features the exclusive blade waterfall to soothe those aching shoulders.



SPECIFICATION

DIMENSIONS:	207 x 207 x 92 CM
SEATS:	5-6 Person Lounger
PUMPS:	2 x 3HP
POWER:	32 AMP
JETS:	116 Recessed Stainless Steel
FILTRATION:	Pressurized Filtration



BALMORAL™

Loaded with aquatic luxury this hot tub is one of the most popular in its range, featuring a range of massage seats including a head to toe hydrotherapy lounger designed to resist body flotation.

With bench style seating, a higher cool down area and wrap around bucket seating, this spa has a seat for everyone to enjoy with a massage to suit all muscle groups - packed with power and a beautiful design.

SPECIFICATION

DIMENSIONS:	207 x 207 x 92 CM
SEATS:	6-7 Person All Seater
PUMPS:	2 x 3HP
POWER:	32 AMP
JETS:	111 Recessed Stainless Steel
FILTRATION:	Pressurized Filtration



WINDSOR™

This is the best-selling compact all seated hot tub, designed to suit all body shapes.

The perfect combination of powerful massage therapy and unique contoured seating - loaded with high volume, sophisticated jets targeting all muscle groups. Choose from higher cool down areas, wrap around max bucket seats or a bench style design enabling you to move around and socialise easily. This model has a seat to suit all, benefiting from stunning waterfalls, a large foot well and steps into the spa for easy access.



SPECIFICATION

DIMENSIONS:	234 x 234 x 93 CM
SEATS:	6-7 Person Lounger
PUMPS:	3 x 3HP
POWER:	32 AMP
JETS:	129 Recessed Stainless Steel
FILTRATION:	Pressurized Filtration



EMPIRE™

This model features ergonomic contoured seating which promotes proper body positioning for maximum massage effect, designed with the human body form in mind.

The 2 max therapy bucket seats offer an invigorating sports massage from the array of massage jets, targeting the upper and lower back as well as the hips. The hydrotherapy lounger stimulates the whole body with a no float designed to keep the bather firmly in place. This spa also benefits from bench style seating perfect for socialising, as well steps into the spa, beautiful waterfalls and a large non-slip foot well.

SPECIFICATION

DIMENSIONS:	234 x 234 x 93 CM
SEATS:	7-8 Person All Seater
PUMPS:	3 x 3HP
POWER:	32 AMP
JETS:	129 Recessed Stainless Steel
FILTRATION:	Pressurized Filtration



STERLING™

One of the largest all seated spas in its class, perfect for entertaining or creating your own luxurious escape.

The seating configuration delivers an exhilarating and soothing massage, Powerful pumps provide an explosion of water through the floor mounted volcano jet and helps turn the hydrotherapy paradise into a torrent of hot water fun and pleasure. Coupled with non-slip steps into the spa and stunning waterfalls this spa is the ultimate relaxation destination.



SPECIFICATION

DIMENSIONS:	234 x 234 x 93 CM
SEATS:	5-6 Person Lounger
PUMPS:	3 x 3HP
POWER:	32 AMP
JETS:	122 Recessed Stainless Steel
FILTRATION:	Pressurized Filtration



UNION™

The ultimate double lounger hot tub featuring a 'his' and 'hers' no float max lounger, as well as wrap seating and a higher cool down seat designed to suit all bathers.

The contoured seating in the loungers are designed for both the male and female body shape, these offer the Fibro Zone™ massage areas for full head to toe hydrotherapy. Other seats incorporate a range of massage zones along with the Foot Zone™ for an invigorating foot massage from the large typhoon jet in the foot well. Coupled with beautiful lit waterfalls and tactile therapy, this spa is the perfect social hub offering unrivalled hydrotherapy.

BRITANNIA™

Offering a beautiful curve design and loaded with every feature ever invented for a garden hot tub.

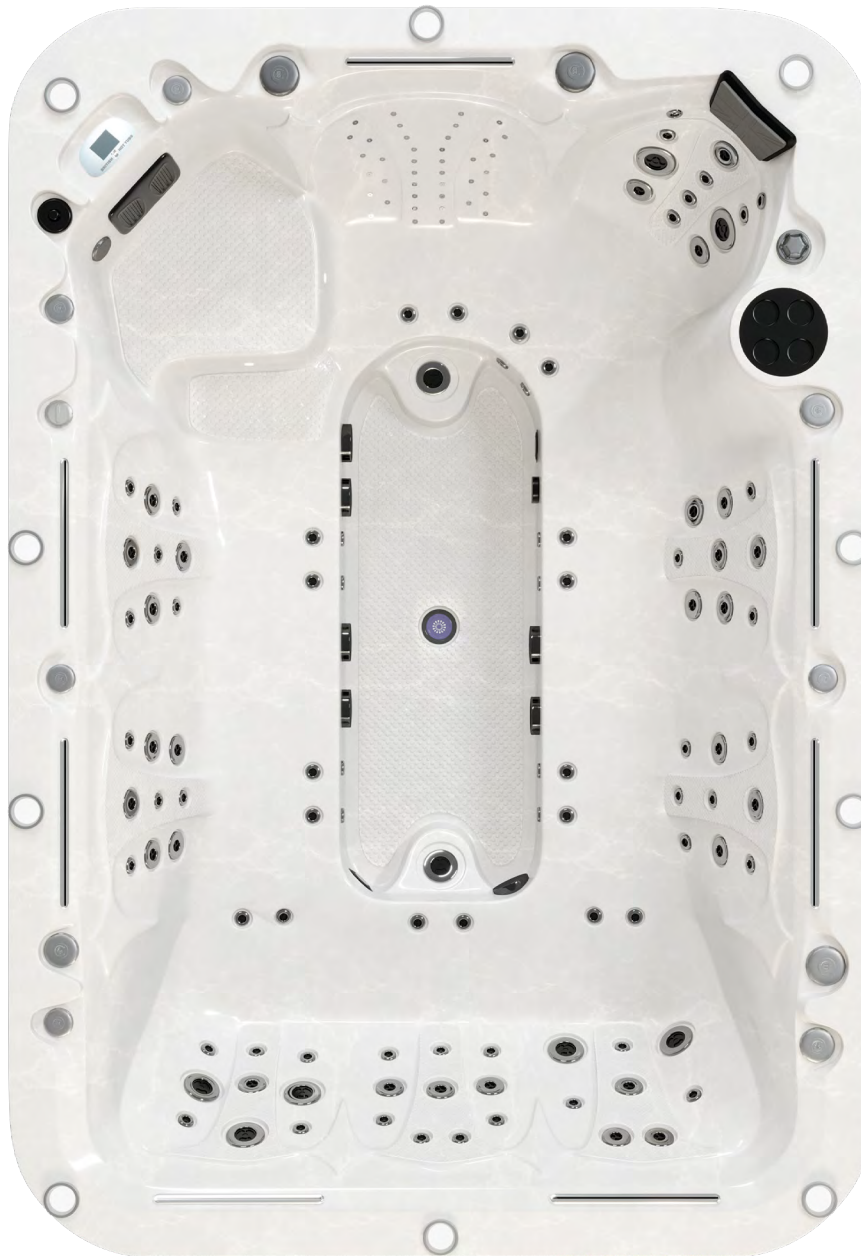
Oozing class, quality and luxury this model is one of the most sought after on the market - a spa within a spa - featuring ergonomic comfortable seating, beautiful lighting and stunning water features.

Massage is totally unrivalled in this model with high volume massage jets delivering ultimate hydrotherapy from an array of massage zones, including 2 no-float loungers benefiting from the Fibro Zone™ with complete customization. This model also boasts bench style seating and higher cool down seats with full body therapy, so there really is a seat to suit every bather.

SPECIFICATION

DIMENSIONS:	305 x 234 x 95 CM
SEATS:	10 Person Lounger
PUMPS:	3 x 3HP
POWER:	32 AMP
JETS:	138 Recessed Stainless Steel
FILTRATION:	Pressurized Filtration





BUCKINGHAM™

This model is the largest in the British Hot Tub line-up with seating for up to 10 adults.

The Buckingham™ boasts ultimate hydrotherapy with a range of massage zones as well as large blade waterfalls offering a beautiful blanket of hot water therapy to soothe those aching shoulders.

Use the large seating area as seats or loungers, with the ability to move around and lounge out freely without restrictions. The large textured footwall offers space for all bathers, and the steps leading into the spa has ease of use in mind. The beautiful ergonomic design and sheer size really is a wow-factor providing the perfect family or party spa for everyone to enjoy.

SPECIFICATION

DIMENSIONS:	335 x 234 x 92 CM
SEATS:	10 Person Double Lounger
PUMPS:	4 x 2HP
POWER:	32 AMP
JETS:	144 Recessed Stainless Steel
FILTRATION:	Pressurized Filtration



DISTINCTIVE DESIGN



FEATURE PACKED AS STANDARD

Balboa Control Panel	Fibro Zone Massage™
Vibro Zone Bluetooth Music System (***)	Gyro Zone Massage™
Zen Zone Spray Waterfalls	Sport Zone Massage™
Zen Zone Waterfall Blade	Power Zone Massage™
Zen Zone Underwater Lighting	Foot Zone Massage™
Clear Zone Programmable Filtration	Acu Zone™
Neck Jets	Anti-Slip Textured Floor
Volcano Jet and Diverter Valve	Drinks Holders
Recessed Thread-In Jet-Pockets	Self-Cleaning Blaster Jet
Stainless Steel Recessed Adjustable Jets	Jet Air Mixture Controls
Water Diverters to Every Seat	Solid Zone - Pressure Treated Frame
High Pressure LX Massage Pumps	Solid Zone - ABS Base
Eco Zone Insulation	Steel Reinforced Spa Acrylic
Thermal Sealed Ultra Locking Cover	Super-Sealed Barb & Clamp Plumbing
Luxury Pillows	Titanium Heater
Shiatsu Massage Nodules	Freeze Protection
Multi-Level Seating	Quick Access Gate Valves
Tactile Therapy	Connect Ready
Pure Zone Plus (Ozone + UV Purification) System (**)	

Please note some models may not have certain features as specified above, please check with your local dealer.

** Only standard on Prime and Premium Models.

*** Only standard on Patio Models.

UPGRADE OPTIONS

Vibro Zone Plus

Bluetooth, AUX, USB, Radio Unit with 4
Waterproof Speakers + Subwoofer

Zen Zone Lighting Plus

Lit Cup Holders & Lit Waterfalls

Clean Zone (Inline Sanitation System)

Pure Zone Plus (UV Purification System)

Aromatherapy Injector

Lit Cabinet Corners

Lit Play Zone Table

Wi-Fi App

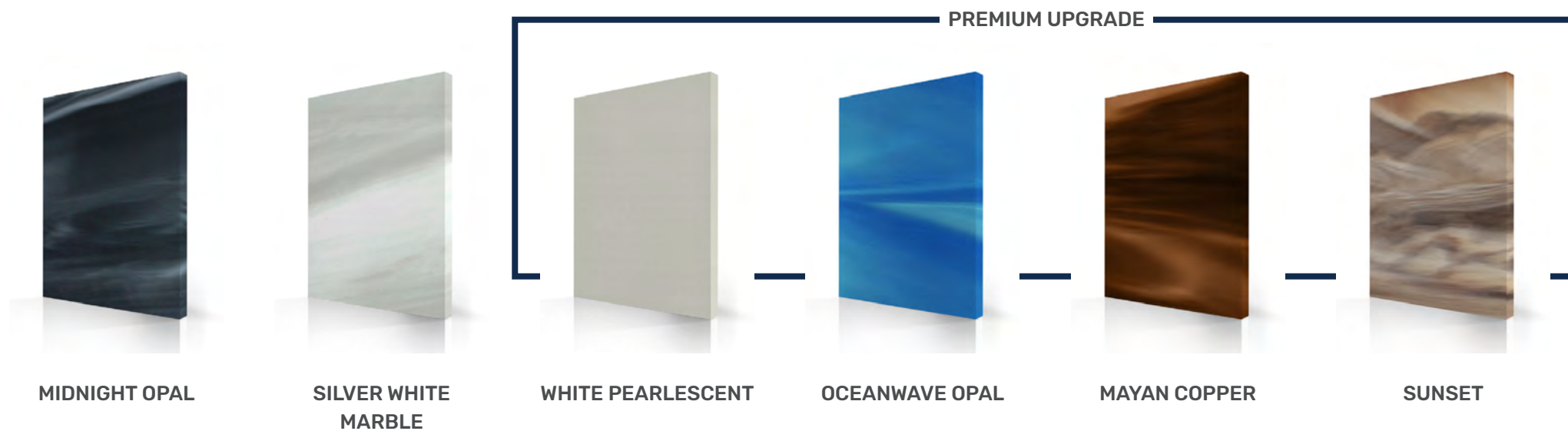
Heat Pump

Non-Slip Steps

Cover Lifter

Weather Zone Spa Bag

SHELL COLOUR CHOICES



Choose from our innovative colors, textures and designs, safe in the knowledge that the surface finish stays bright through years of use, colours remain true, and will not fade or dull in sunlight and Bio-Lok® technology provided by Aristech Acrylics® means the surface cleans easily and naturally resists microorganism buildup.

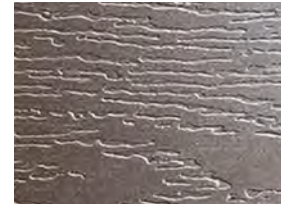
CABINET COLOURS



GREY

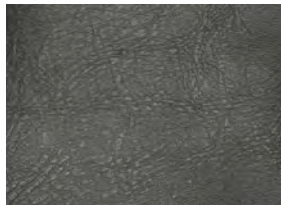


BLACK

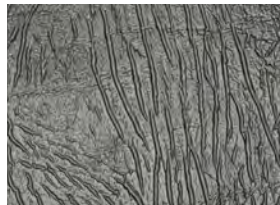


BROWN

COVER COLOURS



GREY



BLACK



BROWN

INSTALL GALLERY

SEE MORE ON OUR WEBSITE







www.britishhottubs.co.uk

Due to continuous improvement programs, British Hot Tubs may make product enhancements and modifications that may not be reflected in the shown content/images. Please see your local Dealership for current specifications.